

## Kettenschutz TRIUMPH Tiger 1050 Chain Guard TRIUMPH Tiger 1050

### Montagehinweise

Alle vom Motorrad gelösten Schrauben sind gemäß Herstellerangaben wieder zu montieren, oder mit von SW-MOTECH gelieferten Schrauben zu ersetzen. Falls nicht anderweitig definiert, diese Schrauben nach Tabelle anziehen:

M6	9,6 Nm
----	--------

Gegebenenfalls Schrauben mit flüssiger Schraubensicherung einkleben.

Prüfen Sie nach 50 km alle Verbindungen auf festen Sitz.

### Mounting Instruction

SW-MOTECH products should be installed by a qualified, experienced motorcycle technician. If you are unsure of your ability to properly install a product, please have the product installed by your local motorcycle dealer. SW-MOTECH takes no responsibility for damages caused by improper installation.

All screws, bolts and nuts, including all replacement hardware provided by SW-MOTECH, should be tightened to the torque specified in the OEM maintenance manual for your motorcycle. If no torque specifications are provided in the OEM maintenance manual, the following torques may be used:

M6	9,6 Nm
----	--------

All screws, bolts and nuts should be checked after driving the first 50 km to ensure that all are tightened to the proper torque.

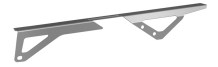
Medium strength liquid thread-locker (i.e., "Loctite") should be used to secure all screws, bolts and nuts.

SW-MOTECH GmbH & Co. KG  
Bahnhofstrasse 44d  
35282 Rauschenberg  
-Germany-

Tel.: ++ 49 (0) 6425 816 800  
Fax: ++ 49 (0) 6425 816 810

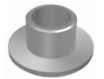
www.sw-motech.com

1 Kettenschutz  
Chain Guard



KTS.11.515.001	03
Anzahl/ Pcs.	1

2 Bundbuchse  
Flanged Spacer



KTS.00.045.001	00
Anzahl/ Pcs.	3

3 Gummitülle  
Rubber Element

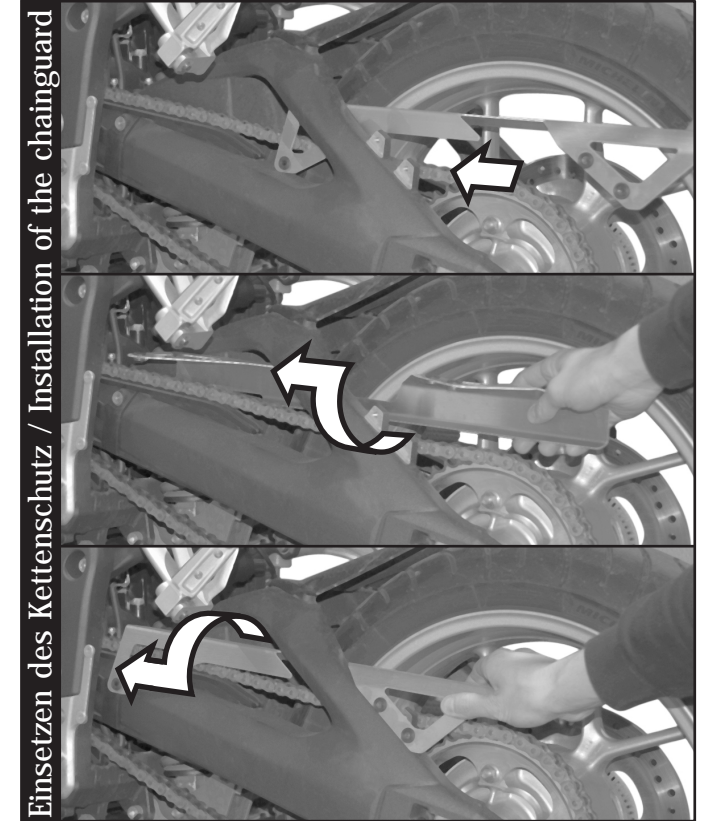
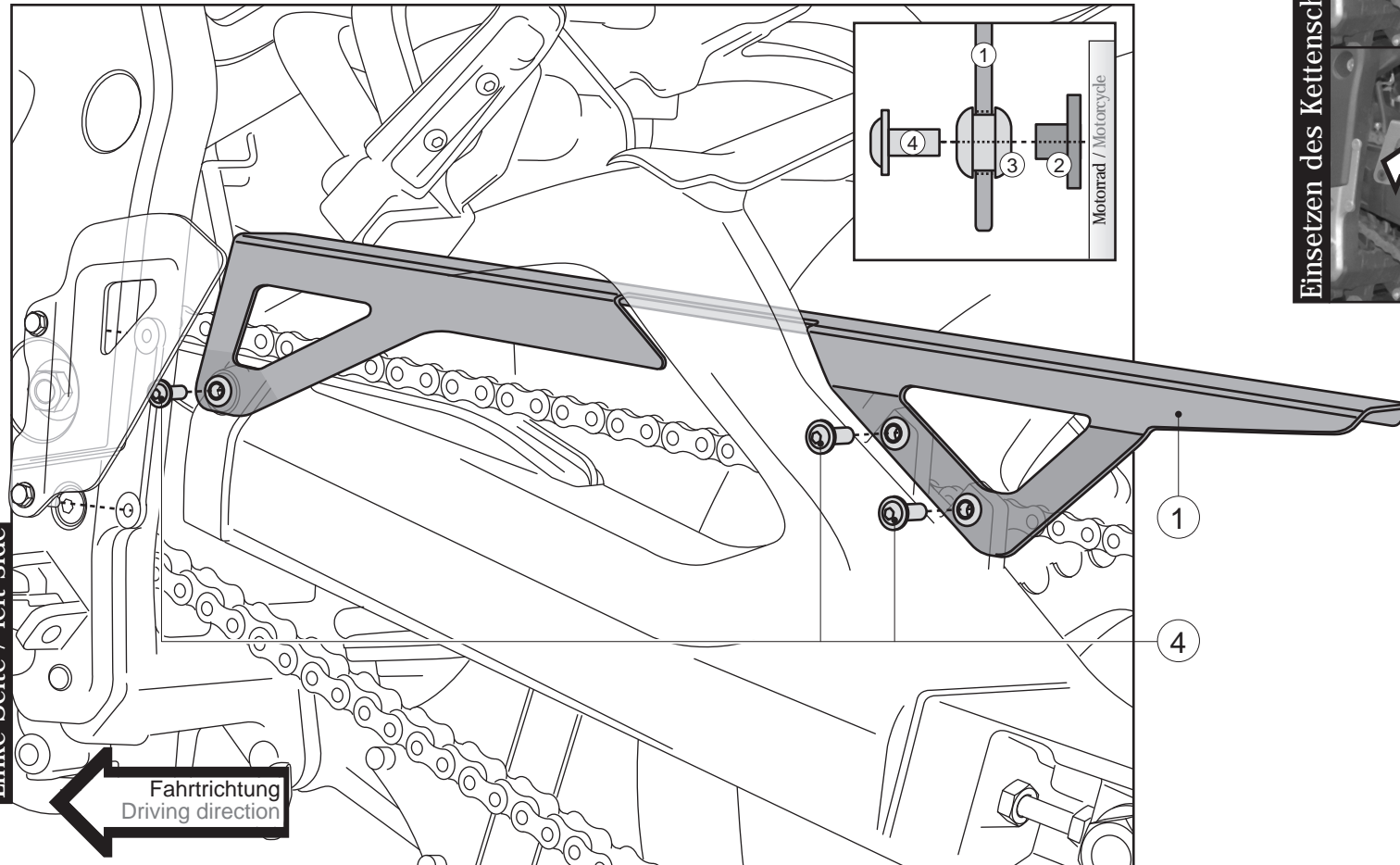
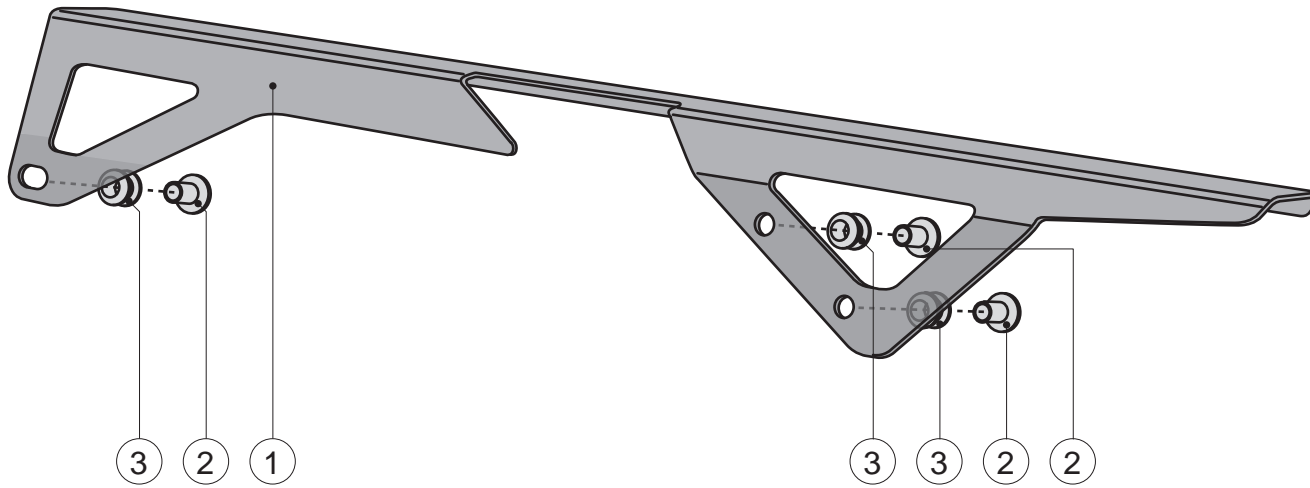


GT.00.12H3468	
Anzahl/ Pcs.	3

4 Linsenkopfschraube  
Lenshead Screw



M6 x 16	ISO 7380
Anzahl/ Pcs.	3



Einsetzen des Kettenschutz / Installation of the chainguard

**!** Kettenschutz vorsichtig einsetzen, da es sonst zu Kratzern an der Hinterradschwinge kommen kann!  
 Be careful while attaching the chainguard to prevent scratches on the swingarm!